



THE CHINA NAVIGATION CO. LTD.



M.S. PAPUAN CHIEF

981 TEU Geared Multi-Purpose Containership

BUILT

February 1991
Miho Zosen, Shimizu, Japan
Lengthened May 2005

PORT OF REGISTRY

Hong Kong

CLASS

Lloyds +100A1 LMC UMS Containership
(No. 3 hold suitable for general cargos)
IMO No. 8901705
Off. No. HK-0008

DIMENSIONS

Length O.A. : 158.055m
Length B.P. : 148.305m
Breadth Mld. : 22.00m
Depth Mld. : 11.00m
Summer draft : 7.981m
Summer Dwt. : 13557.20 mt
GRT : 10350.00
NRT : 5802.00
GRT Suez : 10837.54
Panama :
NRT Suez : 8774.96
Panama : 9303.00

CALL SIGN

VRRC

COMMUNICATIONS

Fleet 77 : No. 764634149 (Tel)
: No. 764634151 (Fax)
Mini M : No. 762712030 (Tel)
: No. 762712031 (Fax)
Satcom C : No. 447706110/11
Email : papuanchief@cnco.amosconnect.com

CONTAINER CAPACITY DETAILS

Three holds No. 1, 2 & 4 are fully cellular, with cell guides for 20' I.S.O. containers.

No.3 combi hold, with tween decks. No cell guides. Capable of 20' & 40' ISO containers, or break bulk. There are 210 reefer points on deck.

Cargo hold No.1 certified for the carriage of IMDG Class 1.4(S), 2.1, 2.2, 2.3, 3.1, 3.2, 3.3, 4.1, 4.2, 4.3, 5.1, 6.1(A), 6.1(B), 6.1(C), 6.1(D), 8(A), 8(B), 8(C) & 9

Cargo holds 2, 3 & 4 certified for the carriage of IMDG Class 1.4(S), 2.2, 3.3, 4.1, 4.2, 4.3, 5.1, 8(A), & 8(D)

No.3 hold is a multi-purpose space without cellguides but with 8 off - side folding flush fitting tweendecks. Container base plates are provided on the tanktop and tweendecks. Removable beams and pillars, 2 sets are provided athwartships to support the tweendecks.

	20ft	40ft
Capacity		
Hold	378 TEU	48 FEU + 282 TEU
Deck	603 TEU	270 FEU + 63 TEU
Total	981 TEU	318 FEU + 345 TEU

TEU capacity with homogenous load - 12T 14T 16T

IMO criteria and approved 738 701 660
dep. cond. 98% Bunkers &
arr. cond. 15% Bunkers

HATCH COVERS AND DECK STRENGTHS

Holds 1, 2 & 4 - 12 off, 20ft wide single-skin, McGregor pontoon covers, each 20' bay has dedicated lids. All lids are non-sequential opening and stacking. Heaviest lid weight 31 mt. Hold 3, Pontoon hatch cover, consist of 2 panels (P & S) with swing seal joint on the ships centre line.

Stackweights:

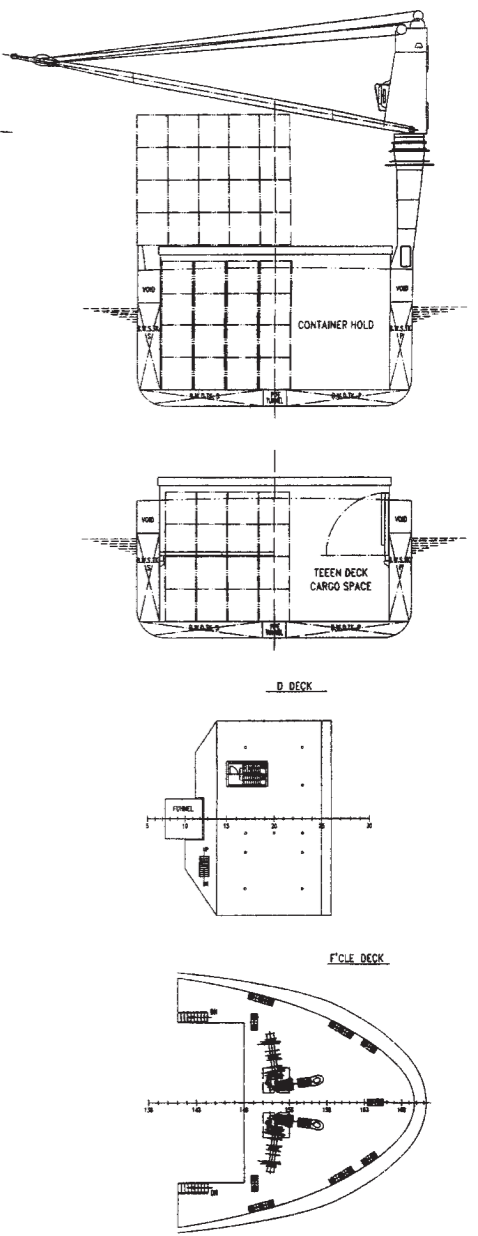
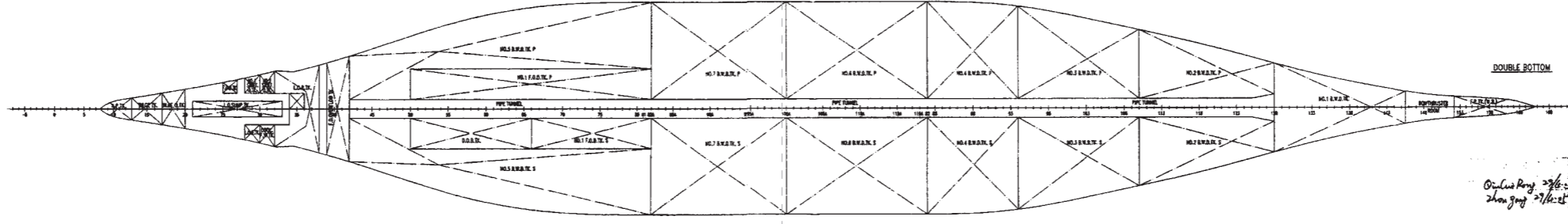
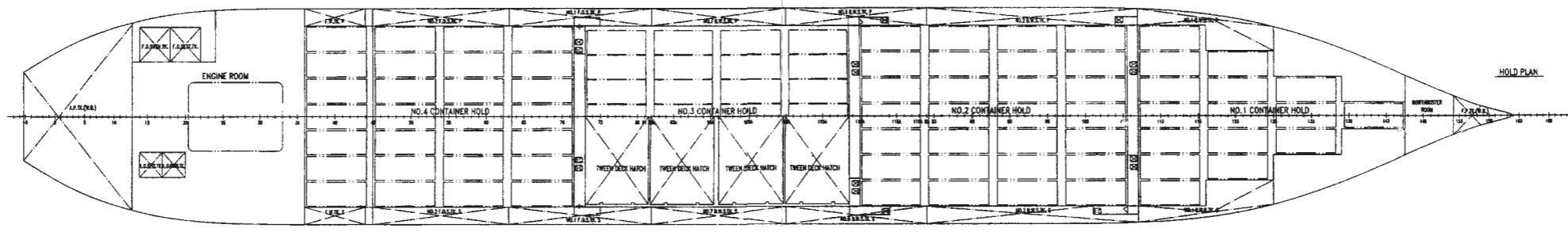
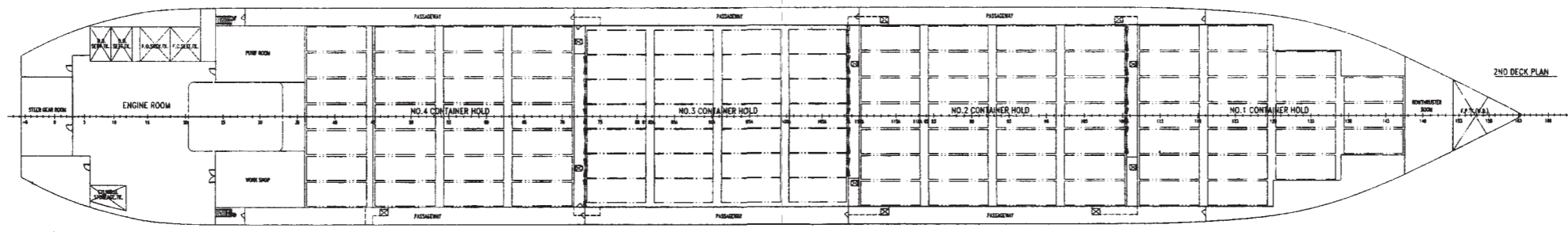
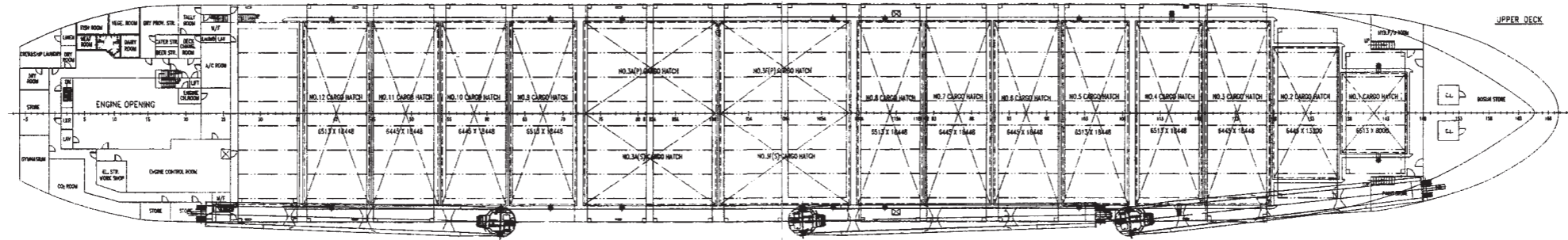
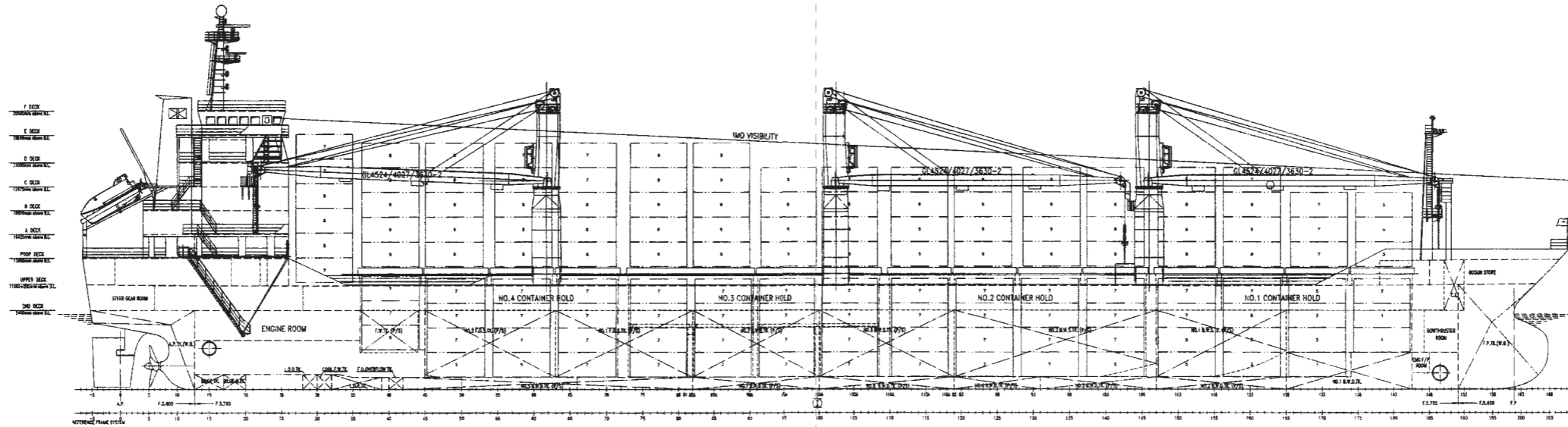
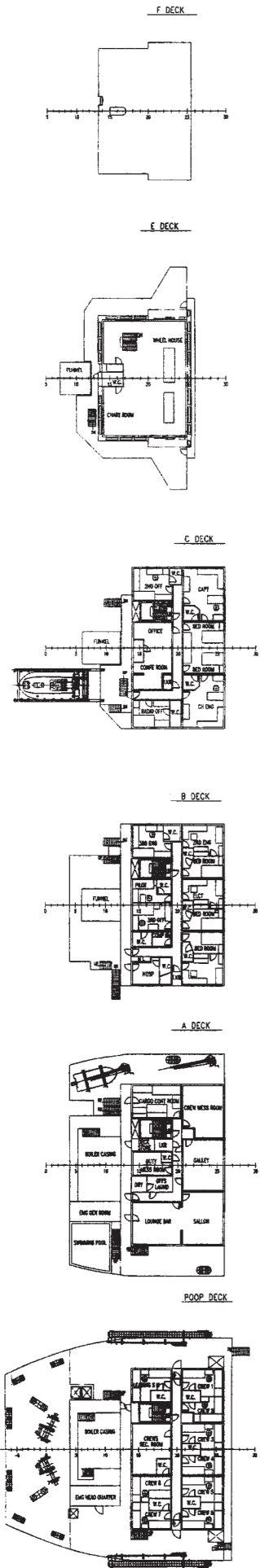
Hatchcovers	
Hold No. 1, 2 & 4	
Deck:	
Container Load	TEU (90mt) FEU (90mt) 1.75 mt/sq.m.
Uniform Load	
Tanktop:	
Container Load	TEU (120mt) 6.40 mt/sq.m.
Uniform Load	
Hold No. 3	
Deck:	
Container Load	TEU (60mt) FEU (90mt) 1.75 mt/sq.m.
Uniform Load	
Tanktop:	
Container Load	TEU (120mt) FEU (150mt) 13.50 mt/sq.m.
Uniform Load	
Tweendeck:	
Container Load	TEU (40mt) FEU (60mt) 3.70 mt/sq.m.
Uniform Load	



M.S. PAPUAN CHIEF

981 TEU Geared Multi-Purpose Containership

SC4551P-100-04



PRINCIPAL PARTICULARS

LENGTH (O.A.)	158.055 m
LENGTH (P.P.)	148.305 m
BREADTH (MLD)	22.00 m
DEPTH (MLD)	11.00 m
SUMMER DRAFT EXTREME (INCLUDING 16mm KEEL)	7.981 m
DEADWEIGHT (AT SUMMER DRAFT)	abt. 13,557.20 mt
CONTAINER IN TAKE	IN HOLD 378 TEU ON DECK 603 TEU TOTAL 981 TEU
MAIN ENGINE	HAN B&W 7L42MC 8,120 ps
COMPLEMENT	19 Persons
CLASSIFICATION	LR + 100A1, +LMC, UMS, "CONTAINER VESSEL"
	NO. 3 HOLD IS SUITABLE FOR GENERAL CARGOES.

PAPUAN CHIEF

13700DWT MPC VESSEL

DESIGNED BY: [Signature]
CHECKED BY: [Signature]
APPROVED BY: [Signature]
DATE: [Date]

GENERAL ARRANGEMENT PLAN
总布置图
PAPUAN CHIEF

SC4551P-100-04
PAGE NO. / NUMBER OF PAGES: 1 / 1
SCALE: 1:100
SHANGHAI MERCHANT SHIP DESIGN & RESEARCH INSTITUTE
上海船舶研究设计院

LENTHENING DESIGN 加长设计
COR. MARKS 校核
DESIGNED BY: [Signature]
CHECKED BY: [Signature]
APPROVED BY: [Signature]
DATE: [Date]

THE DRAWING AND THE INFORMATION CONTAINED IN THE EXCLUSIVE PROPERTY OF SQAIR AND MUST NOT BE COPIED OR FORWARDED TO ANY OTHER PARTY WITHOUT OUR WRITTEN PERMISSION.
此图及图中所包含的信息均为SQAIR的专有财产，未经许可，不得复制或转发给任何第三方。

DR: Liu Peng
Shen Yong

